



Republic
of Rwanda



NATIONAL INSTITUTE OF
STATISTICS OF RWANDA

PRODUCER PRICE INDEX (PPI)

Producer Price
Index

(PPI)

April 2025

Summary

This is the monthly publication of the Producer Price Index (PPI) for the month of April 2025.

On annual basis:

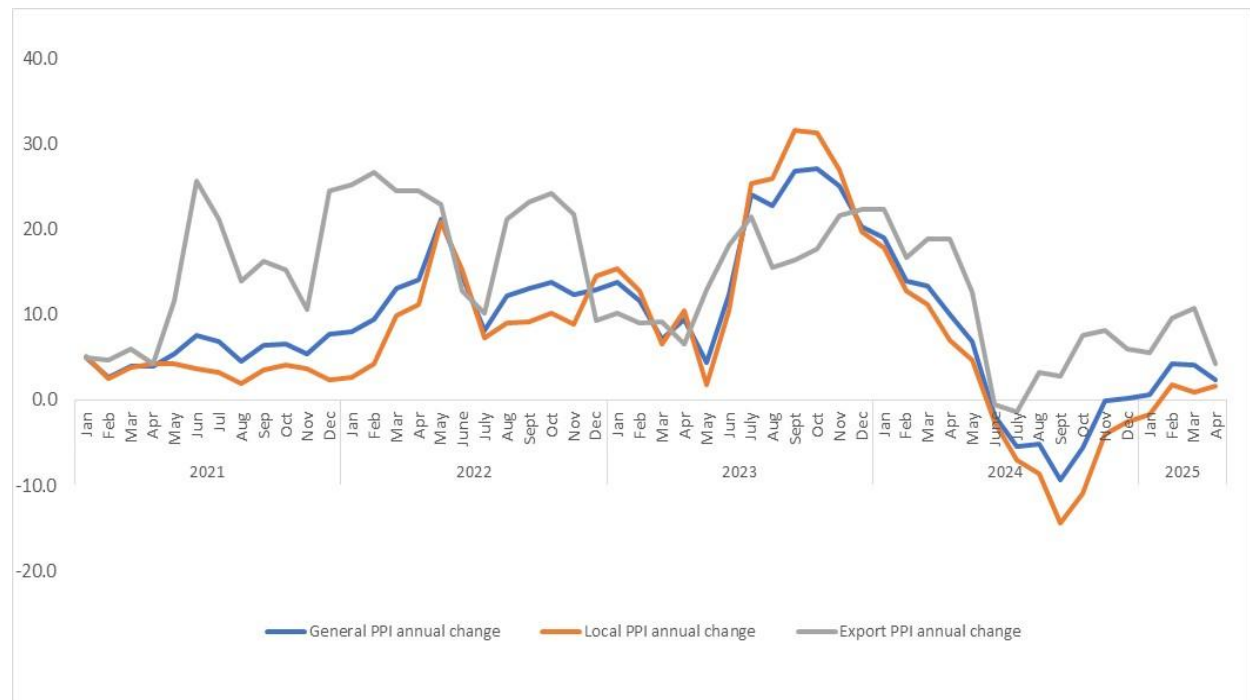
- General Producer Price Index increased by 2.4 percent;
- Local Producer Price Index increased by 1.7 percent;
- Export Producer Price Index increased by 4.2 percent.

On monthly basis:

- General Producer Price Index decreased by 1.9 percent;
- Local Producer Price Index increased by 2 percent;
- Export Producer Price Index decreased by 8.9 percent.

	2024										2025			
	Apr	May	June	July	Aug	Sep	Oct	Nov	Dec		Jan	Feb	Mar	Apr
Annual change														
General PPI	10.0	6.9	-1.9	-5.4	-5.1	-9.3	-5.6	-0.1	0.2		0.6	4.3	4.2	2.4
Local PPI	7.0	4.7	-2.5	-7.1	-8.5	-14.3	-10.9	-3.9	-2.5		-1.7	1.8	0.9	1.7
Export PPI	18.9	12.6	-0.6	-1.3	3.3	2.8	7.5	8.2	5.9		5.5	9.7	10.8	4.2
Monthly change														
General PPI	-0.2	-1.2	-4.4	0.8	1.4	0.3	5.4	3.4	-0.5		0.8	-0.9	-0.6	-1.9
Local PPI	1.1	-1.9	-3.6	0.9	-0.7	-1.4	5.4	3.3	0.5		1.0	-1.2	-2.2	2.0
Export PPI	-3.1	0.3	-6.3	0.5	6.4	3.6	5.6	3.7	-2.2		0.5	-0.3	2.4	-8.9
<i>Source: NISR</i>														

Figure1: Annual PPI for General PPI, local and exports products PPI



Source: NISR

1. Introduction

The Producer Price Index (PPI) measures the average change over time in prices received by domestic producers to produce their goods and services. The PPI for Rwanda is published on monthly basis. It presents price changes for all aggregated products, products for local sales and that for exports.

PPI survey covers a sample of 114 establishments and 402 products spread countrywide (Kigali and provinces). This survey is conducted in collaboration with the National Bank of Rwanda (NBR), and it covers mining, manufacturing, and utilities.

2. General Producer Price Index

Table below presents the percentage changes on monthly and annual basis.

Table 2: Producer Price Index, General Index summary				Percentage change in Apr. 2025	
Level	Index ID	ISIC rev. 4 Description	Weights	on Mar. 2025	on Apr. 2024
1	R	Rwanda	1000	-1.9	2.4
2	RB	Mining and quarrying	96	0.0	1.1
2	RC	Manufacturing	714	-2.3	2.9
2	RD	Electricity, gas, steam and air conditioning supply	58	0.0	0.0
2	RE	activities	129	0.0	0.0
2	RJ	Information and communication	3	0.0	0.0

Source: NISR

In April 2025, the general PPI increased by 2.4 percent when compared to the same month of 2024. This is due to an increase of 2.9 percent in prices of manufacturing and an increase of 1.1 percent in prices of mining activities.

On monthly basis, the general PPI decreased by 1.9 percent. This is due to a decrease of 2.3 percent in prices of manufacturing activities.

3. Local Producer Price Index

The table below presents the percentage changes on monthly and annual basis.

Table 3: Producer Price Index, Local Index summary				Percentage change in Apr. 2025	
Level	Index ID	ISIC rev. 4 Description	Weights	on Mar. 2025	on Apr. 2024
1	R	Rwanda	1000	2.0	1.7
2	RC	Manufacturing	749	2.5	2.2
2	RD	Electricity, gas, steam and air conditioning supply	76	0.0	0.0
2	RE	Water supply; sewerage, waste management and remediation activities	171	0.0	0.0
2	RJ	Information and communication	4	0.0	0.0

Source: NISR

In April 2025, the local PPI increased by 1.7 percent when compared to the same month of 2024. This is due to an increase of 2.2 percent in prices of manufacturing activities.

On monthly basis, the local PPI increased by 2 percent. This is due to an increase of 2.5 percent in prices of manufacturing activities.

4. Export Producer Price Index

The table below presents the percentage changes on monthly and annual basis.

Table 4: Producer Price Index, Exports Index summary			Percentage change in Apr. 2025		
Level	Index ID	ISIC rev. 4 Description	Weights	on Mar. 2025	on Apr. 2024
1	R	Exports	1000	-8.9	4.2
4	RB0729	Mining of other non-ferrous metal ores	393	0.0	1.1
6	RC107980	Manufacture of coffee products	268	-10.2	3.8
6	RC107990	Manufacture of tea products	328	-9.4	5.3
4	RC2029	Manufacture of other chemical products	10	-0.7	10.4
Source: NISR					

In April 2025, the export PPI increased by 4.2 percent when compared to the same month of 2024. This is mainly due to an increase of 5.3 percent in prices of tea products and an increase of 3.8 percent in prices of coffee products.

On monthly basis, the export PPI decreased by 8.9 percent. This is due to a decrease of 9.4 percent in prices of tea products and a decrease of 10.2 percent in prices of coffee products.

Technical note on PPI

The Producer Price Index (PPI) measures the average change over time in the prices received by domestic producers of goods and services which are output of production or enter in the production process.

NISR publishes PPI data for Mining, Manufacturing and Energy; it is published on monthly basis, about 4 weeks following the month under review.

The establishments are classified according to ISIC rev. 4; and the classification is determined by their main output.

The weights used in the PPI for Rwanda refer to the value of output (turnover without taxes) of establishments as reported in the 2011 Manpower survey collecting data for the year 2010, which constitutes the reference base period for the PPI calculation (December 2010).

The point of pricing is the establishment. The price is the selling price received by the producer for the selected product as it leaves the factory gate. In general, prices are collected each month from the selected establishment by considering the mid-point of each month of the month under review.

The formula used in the PPI calculation is the geometric modified Laspeyres.

Annex 1: Producer Price Index, General		Index (Dec 2010=100)			Percentage change in Apr. 2025		Contributions ¹	
Level	Categories	Weights	Apr-24	Mar-25	Apr-25	on Mar. 2025	on Apr. 2024	12 months
1	General Index	1000	203.9	212.8	208.9	-1.9	2.4	2.4
2	Mining and quarrying	96	153.0	154.7	154.7	0.0	1.1	0.1
4	Mining of metal ores	96	153.0	154.7	154.7	0.0	1.1	0.1
2	Manufacturing	714	213.2	224.5	219.4	-2.3	2.9	2.3
4	Manufacture of food products	376	236.7	249.6	241.9	-3.1	2.2	0.9
4	Manufacture of beverages	174	185.8	195.5	195.5	0.0	5.2	1.0
4	Manufacture of textiles	5	95.7	95.7	95.7	0.0	0.0	0.0
4	Printing and reproduction of recorded media	19	111.8	115.1	115.1	0.0	3.0	0.1
4	Manufacture of chemicals and chemical products	29	210.3	224.9	227.4	1.1	8.1	0.3
4	Manufacture of rubber and plastics products	11	231.0	231.3	231.3	0.0	0.1	0.0
4	Manufacture of other non-metallic mineral products	31	138.7	139.0	139.0	0.0	0.2	0.0
4	Manufacture of fabricated metal products, except machinery and equipment	29	144.9	144.9	144.9	0.0	0.0	0.0
4	Manufacture of furniture	9	138.3	142.4	142.4	0.0	2.9	0.0
2	Electricity, gas, steam and air conditioning supply	58	179.5	179.5	179.5	0.0	0.0	0.0
4	Electricity, gas, steam and air conditioning supply	58	179.5	179.5	179.5	0.0	0.0	0.0
2	Water supply; sewerage, waste management and remediation activities	129	190.6	190.6	190.6	0.0	0.0	0.0
4	Water collection, treatment and supply	129	190.6	190.6	190.6	0.0	0.0	0.0
2	Information and communication	3	197.8	197.8	197.8	0.0	0.0	0.0
4	Publishing activities	3	197.8	197.8	197.8	0.0	0.0	0.0
Source: NISR								
(1) "Contributions" take into account both the growth rate and the relative weight of each category to explain the percentage change observed								

Annex 1: Producer Price Index, Local		Index (Dec 2010=100)			Percentage change in Apr. 2025		Contributions 1:	
Level	Categories	Weights	Apr-24	Mar 25	Apr 25	on Mar 25	on Apr 2024	12 months
1	General Index	1000	200.3	199.8	203.7	2.0	1.7	1.7
2	Manufacturing	749	204.4	203.7	208.8	2.5	2.2	1.7
4	Manufacture of food products	305	239.1	231.2	240.2	3.9	0.5	0.1
4	Manufacture of beverages	231	185.8	195.5	195.5	0.0	5.2	0.8
4	Manufacture of textiles	6	95.7	95.7	95.7	0.0	0.0	0.0
4	Printing and reproduction of recorded media	25	111.8	115.1	115.1	0.0	3.0	0.0
4	Manufacture of chemicals and chemical products	35	211.0	224.7	227.6	1.3	7.9	0.2
4	Manufacture of rubber and plastics products	15	117.8	117.8	117.8	0.0	0.0	0.0
4	Manufacture of other non-metallic mineral products	42	138.7	139.0	139.0	0.0	0.2	0.0
4	Manufacture of fabricated metal products, except machinery and e	39	144.9	144.9	144.9	0.0	0.0	0.0
4	Manufacture of furniture	11	138.3	142.4	142.4	0.0	2.9	0.0
2	Electricity, gas, steam and air conditioning supply	76	179.5	179.5	179.5	0.0	0.0	0.0
4	Electricity, gas, steam and air conditioning supply	76	179.5	179.5	179.5	0.0	0.0	0.0
2	Water supply; sGSerage, waste management and remediation acti	171	190.6	190.6	190.6	0.0	0.0	0.0
4	Water collection, treatment and supply	171	190.6	190.6	190.6	0.0	0.0	0.0
2	Information and communication	4	197.8	197.8	197.8	0.0	0.0	0.0
4	Publishing activities	4	197.8	197.8	197.8	0.0	0.0	0.0

Source: NISR

(1) "Contributions" take into account both the growth rate and the relative weight of each category to explain the percentage change observed

Annex 3: Producer Price Index, Export		Index (Dec 2010=100)			Percentage change in Apr. 2025		Contributions ¹ :	
Level	Categories	Weights	Apr-24	Mar-25	Apr-25	on Mar. 2025	on Apr. 2024	12 months
1	General Index	1000	210.6	240.8	219.5	-8.9	4.2	4.2
6	Mining of other non-ferrous metal ores	393	153.0	154.7	154.7	0.0	1.1	0.6
8	Manufacture of coffee products	268	242.6	280.6	251.9	-10.2	3.8	1.4
8	Manufacture of tea products	328	225.2	261.7	237.2	-9.4	5.3	2.5
6	Manufacture of other chemical products n.e.c.	10	203.8	226.7	225.1	-0.7	10.4	0.1
Source: NISR								
(1) "Contributions" take into account both the growth rate and the relative weight of each category to explain the percentage change observed								

Contacts:

National Institute of Statistics of Rwanda (NISR),

P.O. BOX 6139 Kigali,

Tel.: +250-788383103 Hot line: 4321,

Web site: www.statistics.gov.rw

E-mail: info@statistics.gov.rw